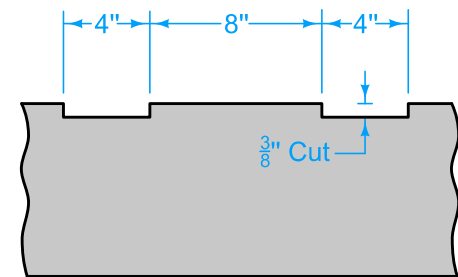
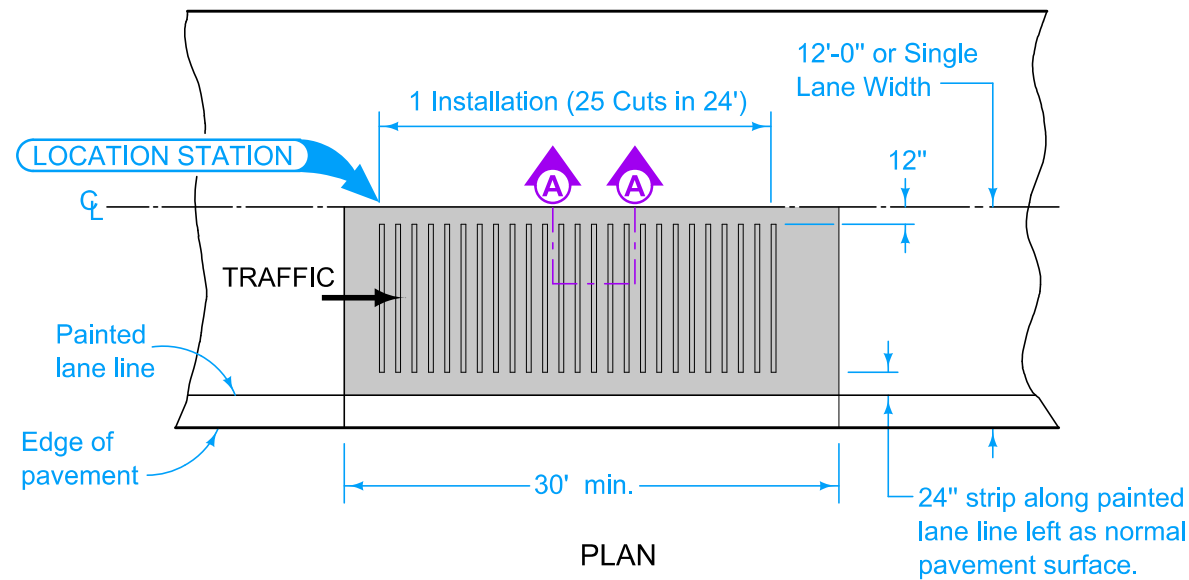
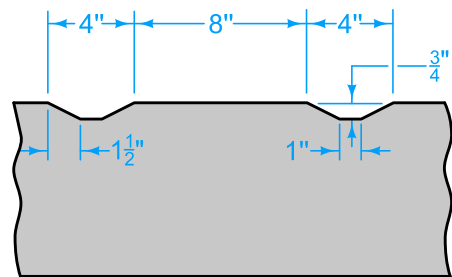


Construct rumble strip panel prior to opening to traffic.

Refer to the contract documents for pavement patching and jointing information.





SECTION A-A
(RUMBLE STRIP CUT IN PAVEMENT)



SECTION A-A
(RUMBLE STRIP PLACED IN PLASTIC P.C. CONCRETE)

- Possible Contract Items:
- CD Joint Assembly
 - CT Joint
 - Patches, Full-Depth Finish, by Area
 - Patches, Full-Depth Finish, by Count
 - Rumble Strip Panel (In Full Depth Patch)
 - Rumble Strip Panel (PCC Surface)
 - Rumble Strip Panel (HMA Surface)

- Possible Tabulations:
- 102-6C
 - 112-7

 IOWA DOT	REVISION	
	3	04-21-20
	PV-10	
STANDARD ROAD PLAN	SHEET 1 of 1	
REVISIONS: Changed 18" strip of normal pavement surface to 24".		
		
APPROVED BY DESIGN METHODS ENGINEER		
RUMBLE STRIP PANEL FOR INTERSECTION APPROACH		